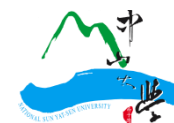
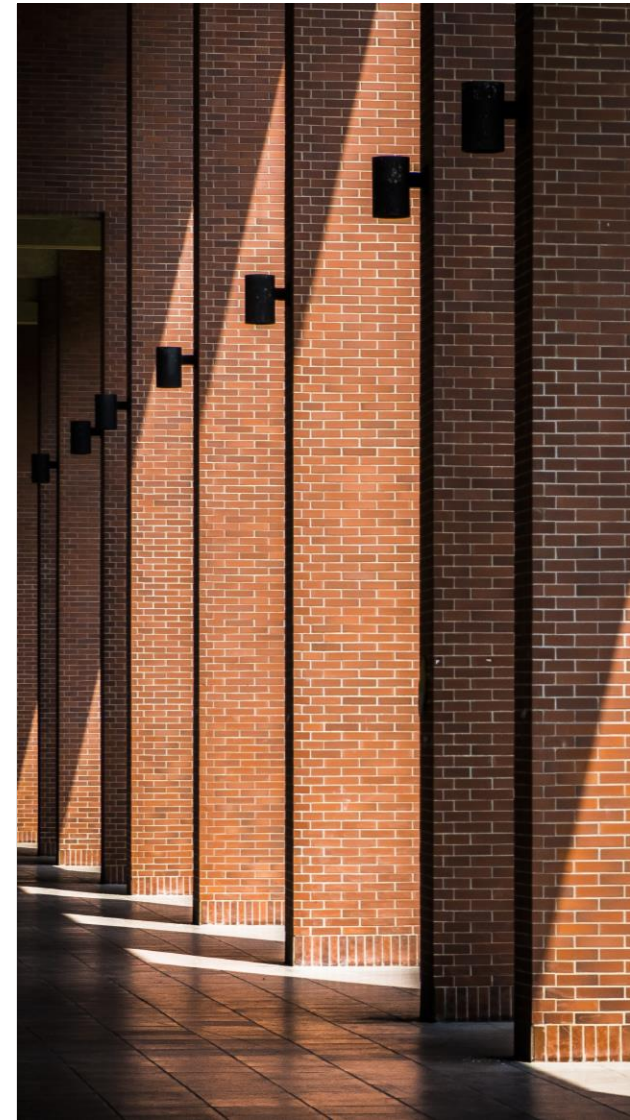


# Exchange at National Sun Yat-sen University

Presented by Office of International Affairs

<https://oia.nsysu.edu.tw/>



<https://www.nsysu.edu.tw>

Your Exchange  
Program  
Coordinator



Ting Siao Ti (Hana)

丁曉緹

Inbound Student Exchange Coordinator  
Office of International Affairs

[ويا.exchange@mail.nsysu.edu.tw](mailto:ويا.exchange@mail.nsysu.edu.tw)

Exchange Program



Visiting Program



# Taiwan





# Kaohsiung City



Kaohsiung City is a special municipality in southern Taiwan. It ranges from the coastal urban center to the rural Yushan Range.

Tropical Monsoon climate with an average temperature of 25°C, with a highest of 32°C in July and the lowest of 15°C in January. Rain and typhoons are usually in the summer months of June - August.



- 2.73 Million People
- 3<sup>rd</sup> Most Populous City
- Largest City in Southern Taiwan



# NSYSU

– established in 1980



A top university in Taiwan granted the 2023-2027 “Higher Education Sprout Project” by the Ministry of Education.

One of 5 best universities in Taiwan according to the 2020 ranking of Global Views Monthly

Located on the scenic spot of Sizihwan embraced by ocean and mountains.

Easily accessible by Kaohsiung International Airport, Taiwan High Speed Rail, Taiwan Railways (TRA), metro-rapid transit (KMRT), light rail (LRT), and i-bus.

- 10,443 Students
- 10% International Students
- 24 Undergraduate Programs
- 52 Master Programs
- 32 Doctoral Programs
- Student-Faculty Ratio: 15:1





# 10 Colleges

Liberal Arts

Management

International Banking and Finance

Social Sciences

Si Wan

Science

Engineering

Marine Sciences

Medicine

Semiconductor and Advanced Technology Research



**Click for Departments and Programs**

# Curriculum

## Courses

- 500+ English-taught courses / Semester
- 5 Course selection phases
- Exchange students can choose courses from different disciplines and study levels.

## Credit Transfer

- Every 18 class hours is counted as 1 credit.
- A 3-credit course will be a 3-hour class per week.

[Course Lists](#)





# Course Features

Free Chinese language course -  
4hrs per week (3 credits)

Water sports courses: Windsurfing,  
Kayaking, Diving, etc.





# Campus Facilities & Student Services

- Canteens & Restaurants
- Convenience Stores
- Bookstore
- Laundry Service
- Barber Shop
- Post Office
- Sports Facilities (Athletic Field, Tennis Court, Baseball Field, Swimming Pool, Tennis Court, Gym, etc.)
- Prayer Rooms
- Clinic and Counseling Service



# Orientation & Buddy Program

Orientation

Campus Tour

Welcome Events

Buddy Program





# Cultural Immersion

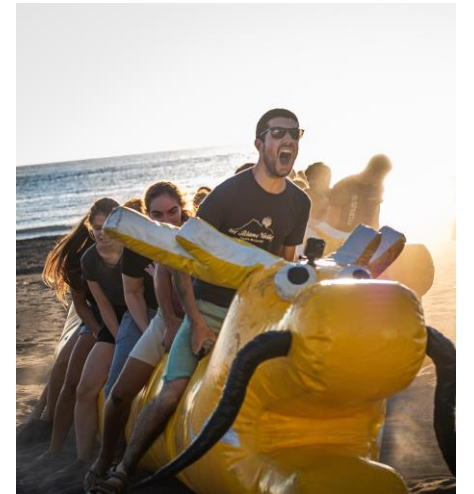
Culture Exchange Sessions

Monkey Ecological Tours

Cultural Workshops

Field Trips

Farewell Parties







## Housing

- On-campus housing

Twin Room – TW\$17,200/TW\$19,400

(≈ £404/ £461)

Quadruple Room – TW\$8,700/NT\$9400

(≈ £206/ £223 )

Water is included.

- Off-campus housing resources



# Approximate Living Cost



Dormitory:  
TW\$8,700~19,400 /  
Semester



Campus Wi-Fi &  
Internet: TW\$300 /  
Semester



Group Insurance:  
TW\$416 / Semester



Books: TW\$5,000 /  
Semester



Meals: TW\$7,000-10,000  
/ Month



Local Transportation:  
TW\$400-500 / Month



Estimated cost for 4  
months:  
TW\$45,000 – 67,000  
(≈ £1,070-1,593)



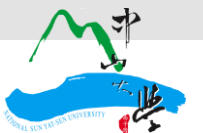
Cash > Mobile Payment  
> Credit Card

MoFA x NSYSU  
Taiwan-Europe  
Connectivity  
Scholarship

- Eligibility: Undergraduate/Graduate students studying in certain European countries without a Taiwanese or Chinese nationality.
- Amount: TW\$80,000 (≈ £1,903) for one semester
- Selection Process:
  1. Partner universities nominate students for the scholarship
  2. NSYSU distributes the scholarship slots to each institution
  3. Students will be asked to sign and return the consent
  4. The final student list will be sent to MOFA
- Students must take and pass the free Chinese course offered by NSYSU (4hrs per week, 3 credits)

# Why NSYSU?

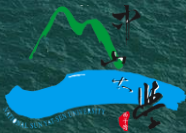
- AACSB & IEEE Accredited (Management & Engineering)
- Research-oriented
- Student Well-being
  - ✓ Best environment for living and study
  - ✓ Friendly staff and student support system
  - ✓ Inclusive and diverse
- Best location to explore different parts of Taiwan with an accessible transportation network
- Lower living expense - 30-40% cheaper than in the capital city







Exchange  
Program



THANK YOU!